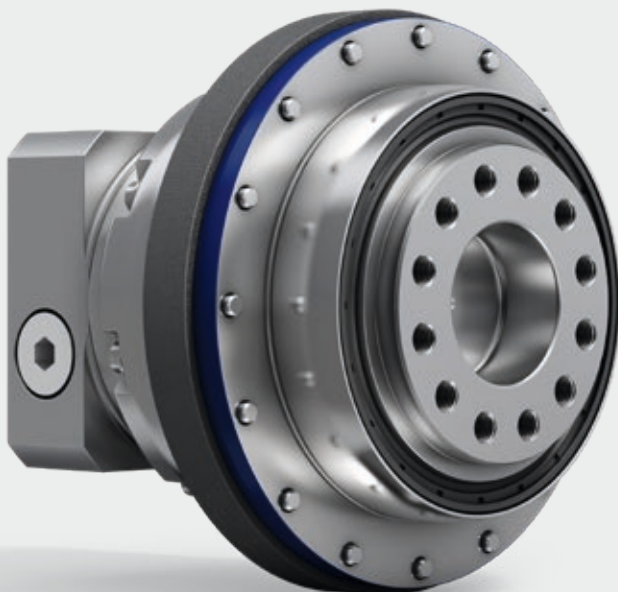


Timesaving
Easy to mount
Secure

Mounting ring for TP⁺ / DP⁺ gearboxes

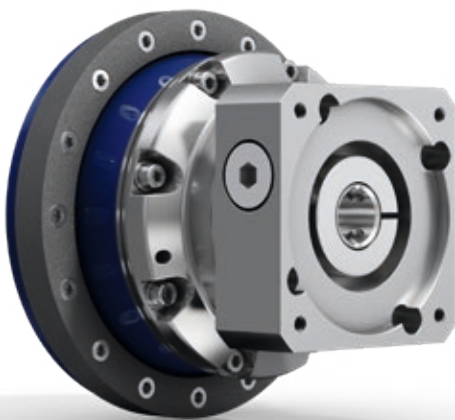


Mounting ring for TP⁺ / DP⁺ gearboxes saves time

This mounting ring comprises a lightweight foam ring with a set of screws arranged on it, already adapted for the hole circle on the TP⁺ / DP⁺ flange gearboxes. The screws are coated with threadlocker and corrosion protection, and are designed with the right length for the machine bed. The mounting ring is shipped completely preassembled together with the gearbox. The preselection and provision of the correct screws considerably reduces the time for assembly.

Benefits at a glance

- **Screw calculations no longer required**
- **Lower logistics costs**
- **Shorter assembly time**
- **Fewer mounting errors**
- **No need to coat the screws with threadlocker in a separate step**



Foam ring,
adapted for the hole
circle on the gearbox

Screws with the right length
and strength class 12.9



Delivered already fitted
to the gearbox

Screws coated
with thread-
locker

How to mount the gearbox and ring to the application

1. Insert the gearbox into the machine (Fig. 1)
2. Screw on the gearbox
→ The screw heads are pushed through the foam of the mounting ring (Fig. 2)
3. Tighten the screws to the specified torque
4. Remove the mounting ring (Fig. 3)
5. Dispose of the mounting ring

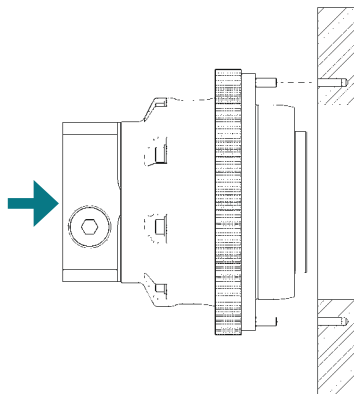


Fig. 1

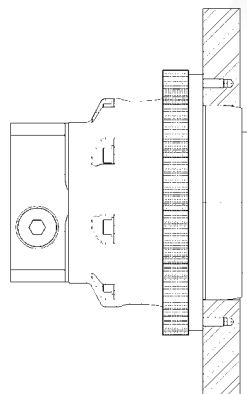


Fig. 2

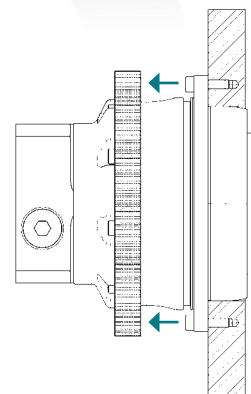


Fig. 3