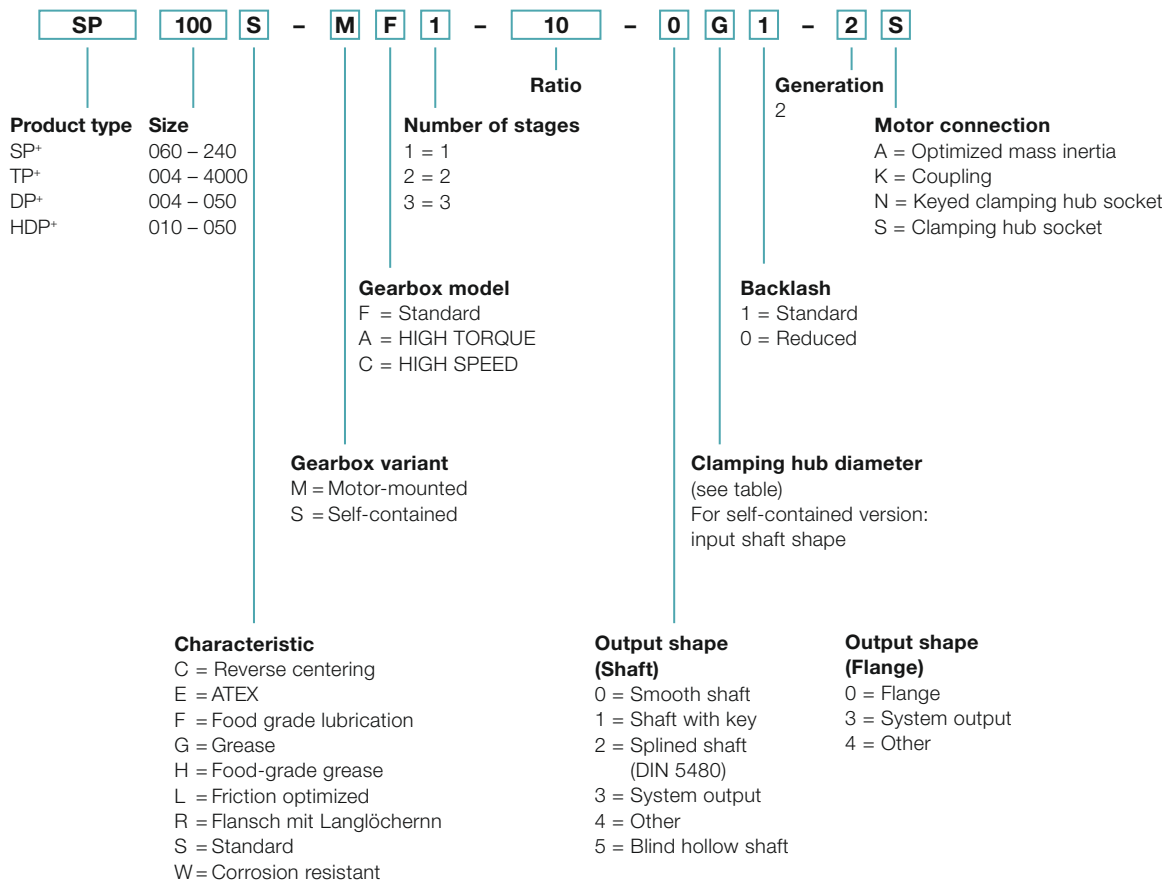


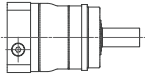
# Ordering code – Planetary gearbox



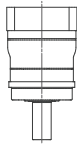
# Mounting positions and clamping hub diameters

Clamping hub diameter  
(see technical data sheet for possible diameters)

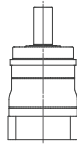
B5  
Horizontal



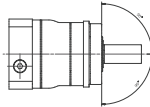
V1  
Output vertical  
downwards



V3  
Output vertical  
upwards



S  
Can be tilted  $\pm 90^\circ$   
from a horizontal  
position



Code letter	mm	Code letter	mm
B	11	I	32
C	14	K	38
E	19	M	48
G	24	N	55
H	28	O	60

Intermediate sizes possible using bushings with a minimum thickness of 1 mm.

**For information purposes only – not required when placing orders!**

## Exceptions:

- The mounting position of TP+ 2000 / 4000 must be specified.
- DP+ / HDP+ products are designed for mounting position B5 as standard!

If the mounting position is different, contact WITTENSTEIN alpha without fail.